



OPOS CONTROL

Application

Development Guide

Version 1.0 Jul. 2009

STAR MICRONICS CO., LTD.

Contents

SECTION 1 HOW TO SET UP.....	1
SECTION 2 CAUTIONS.....	2
2-1. POS Printer.....	2
2-2. Cash drawer	2
SECTION 3 DIRECTIO USAGE	3
3-1. POS Printer.....	3
3-2. Cash drawer	3
SECTION 4 RESULTCODE LIST.....	4
4-1. POS Printer.....	4
4-2. Cash drawer	9
SECTION 5 PROPERTY LIST	10
5-1. POS Printer.....	10
5-2. Cash drawer	11
SECTION 6 RELEASE HISTORY	12

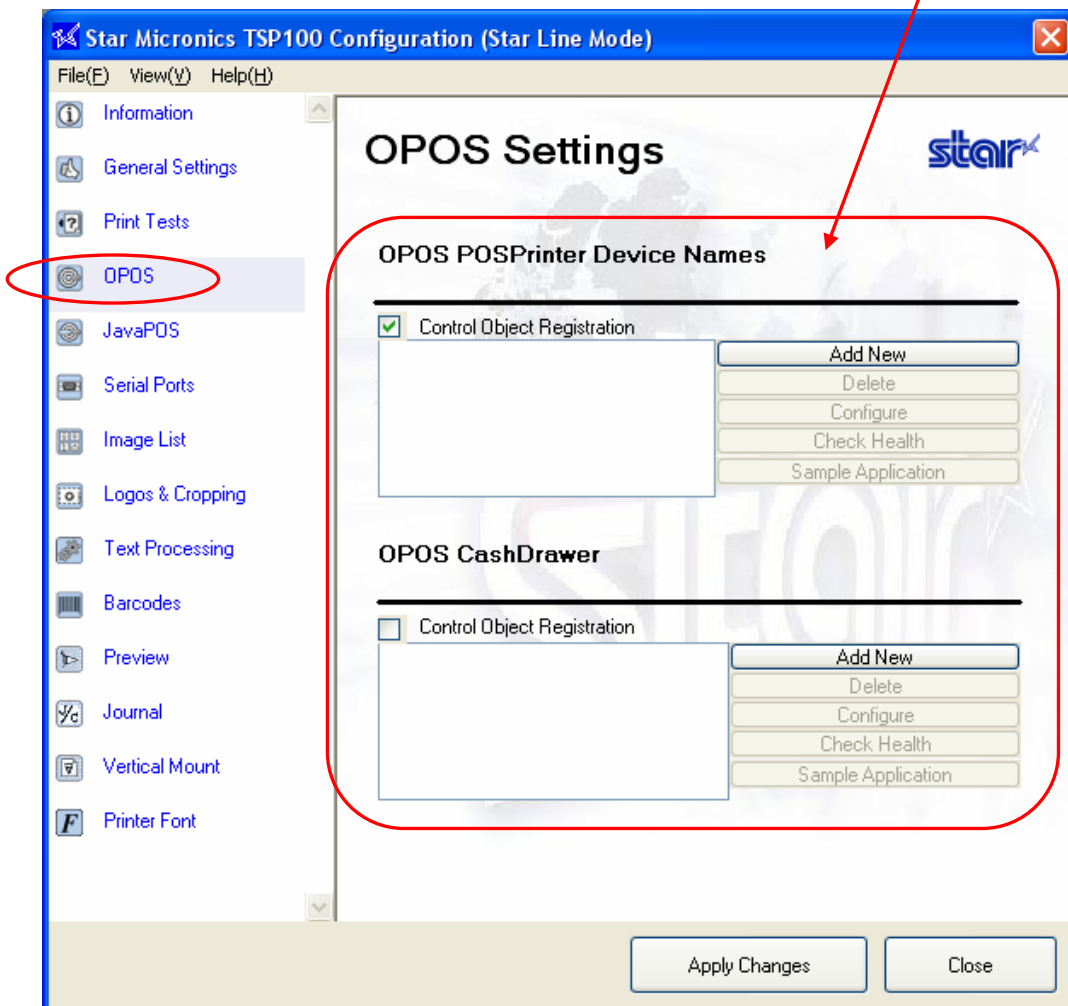
SECTION 1 HOW TO SET UP

From the Windows Start menu, select **Programs – StarMicronics – Star TSP100 – Configuration Utility**.

The OPOS printer driver is included with the Windows driver installation. However, before it can be used with an OPOS application, the printer must be registered. If a cash drawer is connected to the printer, the cash drawer must also be registered. Registration of the printer and cash drawer is accomplished through the Configuration Utility.

Click the 'OPOS' tab on the left side in Configuration Utility menu below to make the configuration.

Here you will enter the detail configuration.



For OPOS Setting details, see the *TSP100 futurePRNT Software Manual*.

Note: Before registering a printer or cash drawer, confirm the control object registration status. The registration procedure is different depending on the control object registration status.

SECTION 2 CAUTIONS

2-1. POS Printer

- 1) Some printers may have the property and the OPOS escape sequence which can be set only at the top of the lines and might be limited at the rotation printing. Refer to the Hardware Manual and Control Guide Book of each device for more detail.

2-2. Cash drawer

- 1) During the connected printer is in busy status (e.g. Paper End, Cover Open, etc.), Cash Drawer can not be opened. ResultCode = OPOS_E_TIMEOUT will be may happens.
- 2) There is no Beep sound on the WaitForDrawerClose method. 2

SECTION 3 DIRECTIO USAGE

3-1. POS Printer

DirectIO Method

None

DirectIO Event

None

3-2. Cash drawer

DirectIO Method

None

DirectIO Event

None

SECTION 4 RESULTCODE LIST

4-1. POS Printer

Method	ResultCode	ResultCodeExtended
Open	OPOS_SUCCESS	-
	OPOS_E_NOSERVICE	-
	OPOS_E_ILLEGAL	-
	OPOS_E_NOEXIST	-
Close	OPOS_SUCCESS	-
	OPOS_E_CLOSED	-
ClaimDevice	OPOS_SUCCESS	-
	OPOS_E_CLOSED	-
	OPOS_E_ILLEGAL	-
	OPOS_E_TIMEOUT	-
ReleaseDevice	OPOS_SUCCESS	-
	OPOS_E_CLOSED	-
	OPOS_E_ILLEGAL	-
CheckHealth	OPOS_SUCCESS	-
	OPOS_E_CLOSED	-
	OPOS_E_FAIRULE	-
	OPOS_E_NOTCLAIMED	-
	OPOS_E_DISABLED	-
	OPOS_E_ILLEGAL	-
ClearOutput	OPOS_SUCCESS	-
	OPOS_E_CLOSED	-
	OPOS_E_DISABLED	-
	OPOS_E_NOTCLAIMED	-
CompareFirmWareVersion	OPOS_E_BUSY	-
	OPOS_E_CLOSED	-
	OPOS_E_DISABLED	-
	OPOS_E_NOTCLAIMED	-
DirectIO	OPOS_E_CLOSED	-
	OPOS_E_ILLEGAL	-
ResetStatistics	OPOS_E_BUSY	-
	OPOS_E_CLOSED	-
	OPOS_E_DISABLED	-
	OPOS_E_NOTCLAIMED	-
	OPOS_E_ILLEGAL	-
RetrieveStatistics	OPOS_E_BUSY	-
	OPOS_E_CLOSED	-
	OPOS_E_DISABLED	-
	OPOS_E_NOTCLAIMED	-
	OPOS_E_ILLEGAL	-
UpdateFirmware	OPOS_E_BUSY	-
	OPOS_E_CLOSED	-
	OPOS_E_DISABLED	-
	OPOS_E_NOTCLAIMED	-
	OPOS_E_ILLEGAL	-

Method	ResultCode	ResultCodeExtended	
UpdateStatistics	OPOS_E_BUSY	-	
	OPOS_E_CLOSED	-	
	OPOS_E_DISABLED	-	
	OPOS_E_NOTCLAIMED	-	
	OPOS_E_ILLEGAL	-	
PrintNormal	OPOS_SUCCESS	-	
	OPOS_E_CLOSED	-	
	OPOS_E_NOTCLAIMED	-	
	OPOS_E_DISABLED	-	
	OPOS_E_ILLEGAL	-	
	OPOS_E_NOHARDWARE	-	
	OPOS_E_OFFLINE	-	
	OPOS_E_FAIRULE	-	
	OPOS_E_TIMEOUT	-	
	OPOS_E_BUSY	-	
	OPOS_EXTENDED	OPOS_EPTR_COVER_OPEN	
		OPOS_EPTR_JRN_EMPTY	
		OPOS_EPTR_REC_EMPTY	
OPOS_EPTR_SLP_EMPTY			
PrintTwoNormal	OPOS_E_CLOSED	-	
	OPOS_E_NOTCLAIMED	-	
	OPOS_E_DISABLED	-	
	OPOS_E_ILLEGAL	-	
	OPOS_E_BUSY	-	
PrintImmediate	OPOS_SUCCESS	-	
	OPOS_E_CLOSED	-	
	OPOS_E_NOTCLAIMED	-	
	OPOS_E_DISABLED	-	
	OPOS_E_ILLEGAL	-	
	OPOS_E_NOHARDWARE	-	
	OPOS_E_OFFLINE	-	
	OPOS_E_FAIRULE	-	
	OPOS_E_TIMEOUT	-	
	OPOS_EXTENDED	OPOS_EPTR_COVER_OPEN	
		OPOS_EPTR_JRN_EMPTY	
OPOS_EPTR_REC_EMPTY			
OPOS_EPTR_SLP_EMPTY			
BeginInsertion	OPOS_SUCCESS	-	
	OPOS_E_CLOSED	-	
	OPOS_E_NOTCLAIMED	-	
	OPOS_E_DISABLED	-	
	OPOS_E_ILLEGAL	-	
	OPOS_E_TIMEOUT	-	
	OPOS_E_BUSY	-	
EndInsertion	OPOS_SUCCESS	-	
	OPOS_E_CLOSED	-	
	OPOS_E_NOTCLAIMED	-	
	OPOS_E_DISABLED	-	
	OPOS_E_ILLEGAL	-	
	OPOS_E_BUSY	-	
	OPOS_E_EXTENDED	OPOS_EPTR_SLP_EMPTY	

Method	ResultCode	ResultCodeExtended	
BeginRemoval	OPOS_SUCCESS	-	
	OPOS_E_CLOSED	-	
	OPOS_E_NOTCLAIMED	-	
	OPOS_E_DISABLED	-	
	OPOS_E_ILLEGAL	-	
	OPOS_E_TIMEOUT	-	
	OPOS_E_BUSY	-	
EndRemoval	OPOS_SUCCESS	-	
	OPOS_E_CLOSED	-	
	OPOS_E_NOTCLAIMED	-	
	OPOS_E_DISABLED	-	
	OPOS_E_ILLEGAL	-	
	OPOS_E_BUSY	-	
	OPOS_E_EXTENDED	OPOS_EPTR_SLP_FORM	
CutPaper	OPOS_SUCCESS	-	
	OPOS_E_CLOSED	-	
	OPOS_E_NOTCLAIMED	-	
	OPOS_E_DISABLED	-	
	OPOS_E_ILLEGAL	-	
	OPOS_E_NOHARDWARE	-	
	OPOS_E_OFFLINE	-	
	OPOS_E_TIMEOUT	-	
	OPOS_E_BUSY	-	
	OPOS_EXTENDED	OPOS_EPTR_COVER_OPEN OPOS_EPTR_REC_EMPTY	
RotatePrint	OPOS_SUCCESS	-	
	OPOS_E_CLOSED	-	
	OPOS_E_NOTCLAIMED	-	
	OPOS_E_DISABLED	-	
	OPOS_E_ILLEGAL	-	
	OPOS_E_NOHARDWARE	-	
	OPOS_E_OFFLINE	-	
	OPOS_E_TIMEOUT	-	
	OPOS_E_BUSY	-	
	OPOS_EXTENDED	OPOS_EPTR_COVER_OPEN	
		OPOS_EPTR_JRN_EMPTY	
OPOS_EPTR_REC_EMPTY			
OPOS_EPTR_SLP_EMPTY			
PrintBarcode	OPOS_SUCCESS	-	
	OPOS_E_CLOSED	-	
	OPOS_E_NOTCLAIMED	-	
	OPOS_E_DISABLED	-	
	OPOS_E_ILLEGAL	-	
	OPOS_E_NOHARDWARE	-	
	OPOS_E_OFFLINE	-	
	OPOS_E_TIMEOUT	-	
	OPOS_E_BUSY	-	
	OPOS_EXTENDED	OPOS_EPTR_COVER_OPEN	
OPOS_EPTR_REC_EMPTY			
OPOS_EPTR_SLP_EMPTY			

Method	ResultCode	ResultCodeExtended	
PrintBitmap	OPOS_SUCCESS	-	
	OPOS_E_CLOSED	-	
	OPOS_E_NOTCLAIMED	-	
	OPOS_E_DISABLED	-	
	OPOS_E_ILLEGAL	-	
	OPOS_E_NOHARDWARE	-	
	OPOS_E_OFFLINE	-	
	OPOS_E_NOEXIST	-	
	OPOS_E_TIMEOUT	-	
	OPOS_E_BUSY	-	
	OPOS_EXTENDED	OPOS_EPTR_TOOBIG	
		OPOS_EPTR_COVER_OPEN	
		OPOS_EPTR_BADFORMAT	
		OPOS_EPTR_REC_EMPTY	
OPOS_EPTR_SLP_EMPTY			
TransactionPrint	OPOS_SUCCESS	-	
	OPOS_E_CLOSED	-	
	OPOS_E_NOTCLAIMED	-	
	OPOS_E_DISABLED	-	
	OPOS_E_ILLEGAL	-	
	OPOS_E_NOHARDWARE	-	
	OPOS_E_OFFLINE	-	
	OPOS_E_TIMEOUT	-	
	OPOS_E_BUSY	-	
	OPOS_EXTENDED	OPOS_EPTR_COVER_OPEN	
		OPOS_EPTR_JRN_EMPTY	
OPOS_EPTR_REC_EMPTY			
OPOS_EPTR_SLP_EMPTY			
ValidateData	OPOS_SUCCESS	-	
	OPOS_E_CLOSED	-	
	OPOS_E_NOTCLAIMED	-	
	OPOS_E_DISABLED	-	
	OPOS_E_ILLEGAL	-	
	OPOS_E_FAILURE	-	
	OPOS_EXTENDED	-	
SetBitmap	OPOS_SUCCESS	-	
	OPOS_E_CLOSED	-	
	OPOS_E_NOTCLAIMED	-	
	OPOS_E_DISABLED	-	
	OPOS_E_ILLEGAL	-	
	OPOS_E_NOEXIST	-	
	OPOS_EXTENDED	OPOS_EPTR_TOOBIG	
OPOS_EPTR_BADFORMAT			
SetLogo	OPOS_SUCCESS	-	
	OPOS_E_CLOSED	-	
	OPOS_E_NOTCLAIMED	-	
	OPOS_E_DISABLED	-	
	OPOS_E_ILLEGAL	-	

Method	ResultCode	ResultCodeExtended
ChangePrintSide	OPOS_E_CLOSED	-
	OPOS_E_NOTCLAIMED	
	OPOS_E_DISABLED	
	OPOS_E_BUSY	
	OPOS_E_ILLEGAL	-
MarkFeed	OPOS_E_CLOSED	-
	OPOS_E_NOTCLAIMED	
	OPOS_E_DISABLED	
	OPOS_E_BUSY	
	OPOS_E_ILLEGAL	-
ClearPrintArea	OPOS_E_CLOSED	-
	OPOS_E_NOTCLAIMED	
	OPOS_E_DISABLED	
	OPOS_E_BUSY	
	OPOS_E_ILLEGAL	-
PageModePrint	OPOS_E_CLOSED	-
	OPOS_E_NOTCLAIMED	
	OPOS_E_DISABLED	
	OPOS_E_BUSY	
	OPOS_E_ILLEGAL	-
PrintMemoryBitmap	OPOS_E_CLOSED	-
	OPOS_E_NOTCLAIMED	
	OPOS_E_DISABLED	
	OPOS_E_BUSY	
	OPOS_E_ILLEGAL	-
DrawRuledLine	OPOS_E_CLOSED	-
	OPOS_E_NOTCLAIMED	
	OPOS_E_DISABLED	
	OPOS_E_BUSY	
	OPOS_E_ILLEGAL	-

4-2. Cash drawer

Method	ResultCode	ResultCodeExtended
Open	OPOS_SUCCESS	-
	OPOS_E_NOSERVICE	-
	OPOS_E_ILLEGAL	-
	OPOS_E_NOEXIST	-
Close	OPOS_SUCCESS	-
	OPOS_E_CLOSED	-
ClaimDevice	OPOS_SUCCESS	-
	OPOS_E_CLOSED	-
	OPOS_E_ILLEGAL	-
	OPOS_E_TIMEOUT	-
ReleaseDevice	OPOS_SUCCESS	-
	OPOS_E_CLOSED	-
	OPOS_E_ILLEGAL	-
CheckHealth	OPOS_SUCCESS	-
	OPOS_E_CLOSED	-
	OPOS_E_CLAIMED	-
	OPOS_E_DISABLED	-
	OPOS_E_ILLEGAL	-
	OPOS_E_BUSY	-
CompareFirmWareVersion	OPOS_E_CLOSED	-
	OPOS_E_ILLEGAL	-
DirectIO	OPOS_E_CLOSED	-
	OPOS_E_ILLEGAL	-
ResetStatistics	OPOS_E_CLOSED	-
	OPOS_E_ILLEGAL	-
RetrieveStatistics	OPOS_E_CLOSED	-
	OPOS_E_ILLEGAL	-
UpdateFirmware	OPOS_E_CLOSED	-
	OPOS_E_ILLEGAL	-
UpdateStatistics	OPOS_E_CLOSED	-
	OPOS_E_ILLEGAL	-
OpenDrawer	OPOS_SUCCESS	-
	OPOS_E_CLOSED	-
	OPOS_E_CLAIMED	-
	OPOS_E_DISABLED	-
	OPOS_E_NOHARDWARE	-
	OPOS_E_OFFLINE	-
	OPOS_E_TIMEOUT	-
	OPOS_E_BUSY	-
WaitForDrawerClose	OPOS_SUCCESS	-
	OPOS_E_CLOSED	-
	OPOS_E_CLAIMED	-
	OPOS_E_DISABLED	-
	OPOS_E_BUSY	-

SECTION 5 PROPERTY LIST

5-1. POS Printer

Property	TSP143U
CapCompareFirmwareVersion	FALSE
CapPowerReporting	OPOS_PR_ADVANCED
CapStatisticsReporting	FALSE
CapUpdateFirmware	FALSE
CapUpdateStatistics	FALSE
CapCharacterSet	PTR_CCS_ASCII
CapConcurrentJrnRec	FALSE
CapConcurrentJrnSlp	FALSE
CapConcurrentPageMode	FALSE
CapConcurrentRecSlp	FALSE
CapCoverSensor	TRUE
CapMapCharacterSet	TRUE
CapTransaction	TRUE
CapJrnPresent	FALSE
CapJrn2Color	FALSE
CapJrnBold	FALSE
CapJrnDhigh	FALSE
CapJrnDwide	FALSE
CapJrnDwideDhigh	FALSE
CapJrnEmptySensor	FALSE
CapJrnItalic	FALSE
CapJrnNearEndSensor	FALSE
CapJrnUnderline	FALSE
CapJrnCartridgeSensor	0
CapJrnColor	0
CapRecPresent	TRUE
CapRec2Color	FALSE
CapRecBarCode	TRUE
CapRecBitmap	TRUE
CapRecBold	TRUE
CapRecDhigh	TRUE
CapRecDwide	TRUE
CapRecDwideDhigh	TRUE
CapRecEmptySensor	TRUE
CapRecItalic	FALSE
CapRecLeft90	FALSE
CapRecNearEndSensor	FALSE
CapRecPapercut	TRUE

Property	TSP143U
CapRecRight90	FALSE
CapRecRotate180	TRUE
CapRecStamp	FALSE
CapRecUnderline	TRUE
CapRecCartridgeSensor	0
CapRecColor	PTR_COLOR_PRIMARY
CapRecMarkFeed	0
CapRecPageMode	FALSE
CapRecRuledLine	FALSE
CapSlpPresent	FALSE
CapSlpFullslip	FALSE
CapSlp2Color	FALSE
CapSlpBarCode	FALSE
CapSlpBitmap	FALSE
CapSlpBold	FALSE
CapSlpDhigh	FALSE
CapSlpDwide	FALSE
CapSlpDwideDhigh	FALSE
CapSlpEmptySensor	FALSE
CapSlpItalic	FALSE
CapSlpLeft90	FALSE
CapSlpNearEndSensor	FALSE
CapSlpRight90	FALSE
CapSlpRotate180	FALSE
CapSlpUnderline	FALSE
CapSlpBothSidesPrint	FALSE
CapSlpCartridgeSensor	0
CapSlpColor	0
CapSlpPageMode	FALSE
CapSlpRuledLine	FALSE

5-2. Cash drawer

Property	TSP143U
CapCompareFirmwareVersion	FALSE
CapPowerReporting	OPOS_PR_ADVANCED
CapStatisticsReporting	FALSE
CapUpdateFirmware	FALSE
CapUpdateStatistics	FALSE
CapStatus	TRUE
CapStatusMultiDrawerDetect	FALSE

SECTION 6 RELEASE HISTORY

Rev. No.	Date (Month/Year)	Contents
Rev. 1.0	Jul. 2009	New Release

Remarks:

- 1) Reproduction of any part of this documentation is prohibited.
- 2) The contents of this documentation are subject to change without notice.
- 3) We can assume no responsibility for any results which may come out of the usage instructed in this documentation.

Trademarks:

Company and product names are trademarks or registered trademarks of their respective companies.

Special Products Operating Division

536, Nanatsushinya, Shimizu-ku, Shizuoka 424-0066

TEL: 054-347-0112 (Direct-dial to Sales)

<http://www.star-m.jp.dl/dl02.htm>